

Sage 200 Extra 2015 Service Pack 1 Installation and Release Notes

Sage 200 Extra 2015 Service Pack 1

About these release notes

This document contains essential information for Sage 200 Extra 2015 SP1 on premise deployments. You must read this document before you use Sage 200 Extra 2015 SP1.

A separate document, *Sage 200 Extra 2015 SP1 Feature Updates and Issues Fixed* contains details of all of the fixes and updates in this service pack.

Note: 3rd party add-ons **do not** have to be recompiled as part of the installation process as assembly versions have not changed.

Important Note

This service pack contains two files:

- Sage200v2015SP1ClientPrerequisites.exe
- Sage200v2015SP1.msp

On a client PC both files must be run, in that order, to ensure that the service pack installs correctly.

Sage200v2015SP1ClientPrerequisites.exe checks the client files and ensures that the correct registry keys are present on the client machines.

Sage 200v2015SP1.msp updates Sage 200 Extra.

Failure to run the files in this order will cause errors when you try to run Sage 200 Extra 2015.

On a server, you only need to install the Sage 200v2015SP1.msp file.

Sage 200 Extra 2015 Service Pack 1

Pre requisites

Note: You must take backups of your individual Sage 200 Extra company databases and your Sage 200 configuration database before you install this service pack.

As part of the installation, the Service Pack may restart IIS.

This will happen if an existing DLL or process being used by Sage 200 Extra is still in use.

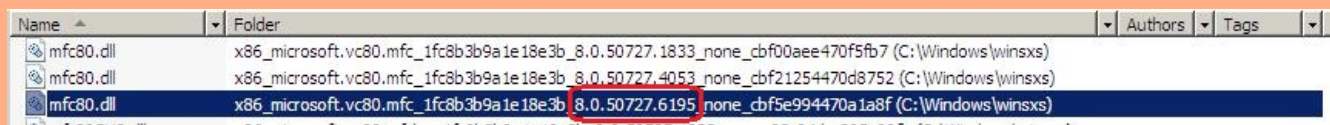
An IIS reset will close that file so that it can be patched.

Before running the Service Pack, you must also ensure that all users are logged out of Sage 200 and all other applications.

An important note about Microsoft Updates...

If you are using Windows7, Windows Server 2008, Windows Server 2008 R2 or Windows Vista, you must have the Microsoft Visual C++ 2005 SP1 MFC Security Update (32 bit) installed.

You can check this on a machine by searching for MFC80.dll. There may be multiple versions of these files present, but one of these files needs to be at least version 8.0.50727.6195:



Name	Folder	Authors	Tags
mfc80.dll	x86_microsoft.vc80.mfc_1fc8b3b9a1e18e3b_8.0.50727.1833_none_cbf00aee470f5fb7 (C:\Windows\winsxs)		
mfc80.dll	x86_microsoft.vc80.mfc_1fc8b3b9a1e18e3b_8.0.50727.4053_none_cbf21254470d8752 (C:\Windows\winsxs)		
mfc80.dll	x86_microsoft.vc80.mfc_1fc8b3b9a1e18e3b_8.0.50727.6195_none_cbf5e994470a1a8f (C:\Windows\winsxs)		

If you do not have the file installed (or the files found are an earlier version), you must follow the instructions in the [‘Known Installation Issues’](#) section of this document before installing this service pack. Not doing so causes the installation to fail or causes issues in the Cash Book following the installation of 2015 SP1.

Sage 200 CRM Integration

In order to continue to use Sage 200 CRM with service pack 1, you must have previously installed the following (in order):

- Sage CRM 7.3
- Sage CRM patch a

Stopping IIS and Sage Task Launcher

If you use Sage 200 CRM, you must stop IIS and Sage Task Launcher before installing the service pack. To do this:

1. From the Start prompt, enter the Run command.
2. Enter IISRESET /STOP and click Enter.
3. From the system tray on your machine, right-click on Sage.TaskLauncher and click Exit from the pop-up menu.

You can then start the installation.

Sage 200 Extra 2015 Service Pack 1

Installing Service Pack 1

Important Note: You must log in as an Administrator when installing Sage 200 Extra 2015 SP1.

If you do not log in as an Administrator, you may see errors generated by a file named AutoUpdatesRegistrationCA.exe during the installation routine.

To update the Sage 200 Extra Server and Clients

There are two ways to deploy the service pack.

- Copy the Sage200v2015SP1.msp file onto every machine (clients, servers etc). Next, copy the Sage 200 Sage200v2015SP1ClientPrerequisite.exe onto your client machines. Then follow the instructions below.
- Alternatively, copy the Sage200v2015SP1ClientPrerequisite.exe file and Sage200v2015SP1.msp and file to a central location and access it from each machine that requires the update. Then follow the instructions below.

Note for CRM users: You must stop the IIS server and Sage Task Launcher before starting the installation.

Failure to do so will generate a warning that some files are currently in use. Stopping the IIS server will close any files that need to be updated.

Installing the service pack on Sage 200 Servers

1. Select the Sage200v2015SP1.msp file and double-click on the file to start the service pack installation.
2. Follow the on-screen instructions to update the Sage 200 Extra Suite.

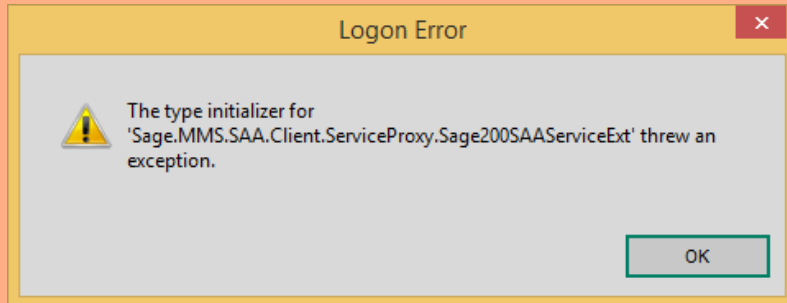
Installing the service pack on Sage 200 Clients

1. Select the Sage200v2015SP1ClientPrerequisite.exe and double-click on the file to start the installation.
A Command Prompt window will open while the system updates the required files for the Client machines. The window will close automatically.
2. Select the Sage200v2015SP1.msp file and double-click to install the service pack.
3. Follow the on-screen instructions to complete the update.

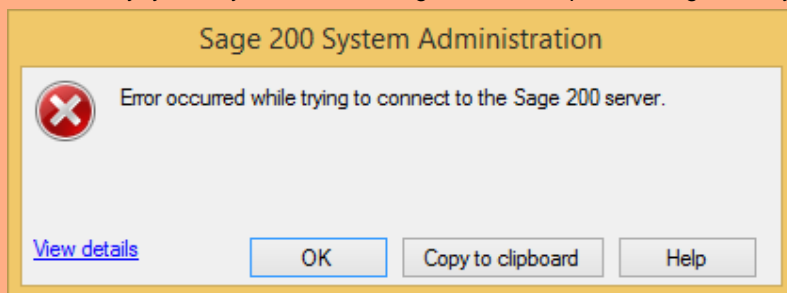
Sage 200 Extra 2015 Service Pack 1

An important note about Sage 200 Extra Client installations

If you do not install the Sage200v2015SP1ClientPrerequisite.exe file prior to installing the Sage200v2015SP1.msp file you will receive the following error when opening the Sage 200 Application on the client machine;



Alternatively, you may see the following error when open the Sage 200 System Administration;



The 'View details' link will display the following error;

The type initializer for 'Sage.MMSAdmin.Kernel.SrvcAcc' threw an exception.

If you receive this error, you must follow the instructions in the ['Known Installation Issues'](#) section of this document.

Updating the Sage 200 Databases

Once installed, you must update your database.

Configuration Database

Service Pack 1 changes the Configuration Database. Please be aware that as a result of this, the configuration database version will be listed as 10.00.0010 following the update. The company data will also be updated to 10.00.0010

Company Database

Once you have updated the Configuration database and have logged into System Administration, you are ready to update the Company database(s).

1. Select Companies, and from the menu bar, click Action.
2. From the Action drop-down menu, select Update All Companies.
You can also choose to update one company at a time.
All Sage 200 Extra 2015 SP1 company databases are updated to the latest version; 10.00.0010.

Sage 200 Extra 2015 Service Pack 1

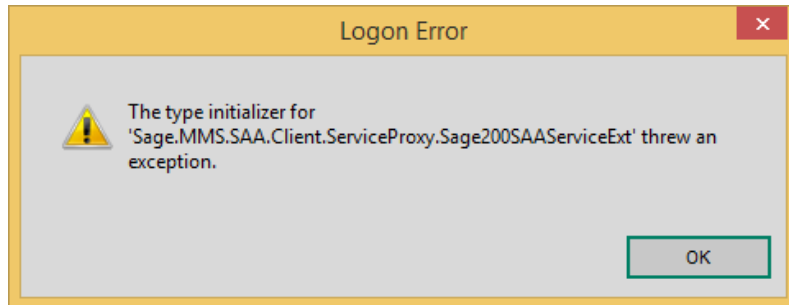
Sage 200 CRM integration

If Sage 200 is integrated CRM and you **have not** previously installed Sage 200 2015, you must also install CRM 7.3a. These files are included in a separate zip file (CRM 7.3 Patch a), supplied alongside the installation files for this service pack.

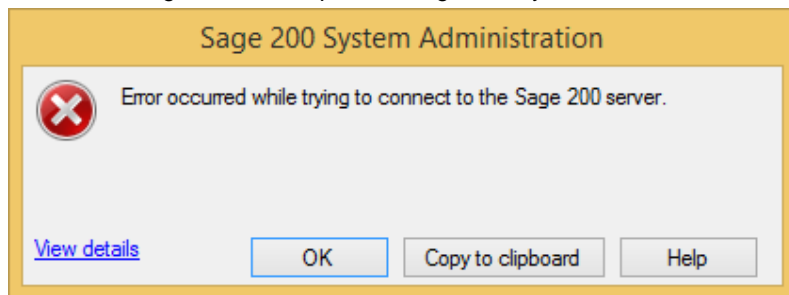
Known Installation Issues

Error opening Sage 200 Application on client machines

If the Sage200v2015SP1ClientPrerequisite.exe file was not run prior to installing the Sage200v2015SP1.msp file, you will see the following error when opening the Sage 200 Application on a client machine:



Or the following Error when open the Sage 200 System Administration:



View details will display the following error;

The type initializer for 'Sage.MMSAdmin.Kernel.SrvcAcc' threw an exception

Resolution

1. Browse to the Sage 200 Extra installation folder on the server:
If you have installed using the default installation directory, go to the following folder:
On a 32-bit Server: ...\\Program files\\Sage\\Sage200
On a 64-bit Server: ...\\Program files(x86)\\Sage\\Sage200
2. Make a copy of the Sage200CommonAppSettings.config file and copy the file to the program directory on the Client machine.
3. Select the Sage200v2015SP1ClientPrerequisite.exe and double click on the file to run it. A Command Prompt window will open, update your system and then close automatically.
4. Open the application again. Ensure that it opens correctly without error.

Sage 200 Extra 2015 Service Pack 1

Sage 200 Manufacturing

Stock Projection Details

We have replaced some charting controls in Sage 200 Extra 2015. This improves compatibility with Windows 8, Windows 8.1 and Windows Server 2012. This change also provides a consistent look and feel with other areas of Sage 200 Extra.

As a result of these changes, the following graphs are not available:

- Graph tab on Stock Projection Item Details
- Graph tab on Monitor Operation Times
- Histogram tab on Monitor Operation Times

This prevents you from using the options in those Workspaces (for example, opening, saving, Copy to Clipboard, print and the tools to change the display of the charts).

MRP – Unable to amend the first recommendation on the system

When the user runs MRP within Manufacturing for the first time, the MRP numbering sequence runs from MRP000000, rather than MRP000001.

As a consequence of this, the first recommendation will not be selectable on the MRP Recommendations form.

To renumber the recommendations you must run the MRP twice on a new dataset, before actioning or maintaining any recommendations.

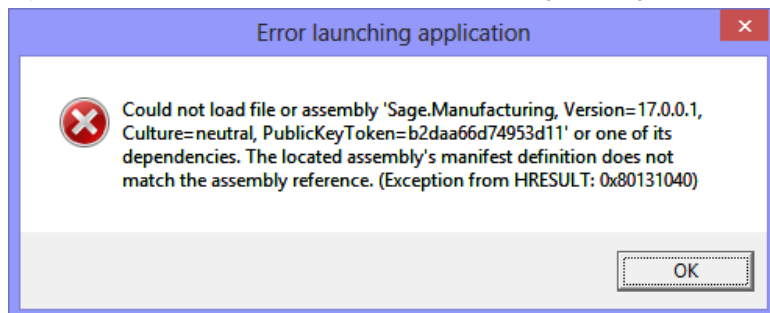
Subsequently, MRP need only be run once.

Sage 200 Suite Tools

Sage 200 2015 uses a new version of ManufacturingCSVFileConversion.exe

The latest version of the CSV Conversion Tool is incompatible with Sage 200 Extra 2015 or SP1.

If you attempt to use the previous tool, the following message appears:



You must ensure that you have downloaded the latest version of the tool from the [Support website](#).